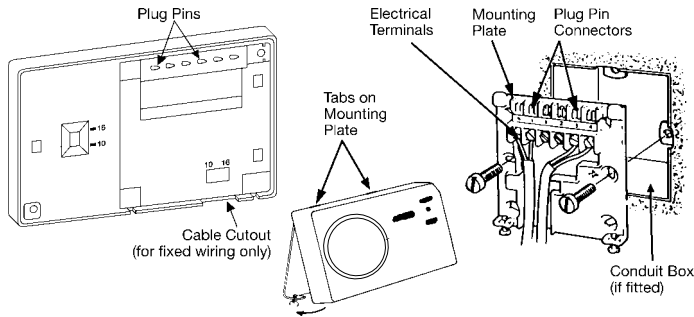


RWB30 Timeswitch Installation Instructions



IMPORTANT!
Please read this before installing your unit.
1. Complete wiring to backplate, clip programmer onto backplate, power up and rotate dial through a full 24 hour rotation.

Mounting Location

To ensure convenience of use, the RWB30 should be fitted in a position which allows easy access. It is recommended that the unit is placed at a height of 1.4 metres from the floor.

NB The RWB30 should not be installed in locations that are directly exposed to water splashes or steam from cooking utensils and kettles etc.

Backplate

The RWB30 is supplied with the industry standard backplate to which the system must be wired. The backplate can be fitted directly to the wall or it may be wired on a standard conduit box. If it is fitted to a wall, do not mount on an unearthed metal or metallic surface. If a conduit box is fitted all wiring to the backplate should pass through the base. The backplate is the same as that used with: RWB3, RWB30, RWB50, RWB100 series and RWBXT Timeswitches.

When the RWB30 is used as a direct replacement no re-wiring is necessary, (except in the case of the RWB3 when **a link should be inserted across Terminals L and 2 as shown in Fig. 2).**

Timeswitch Wiring Diagrams

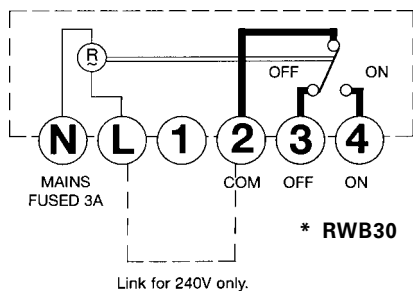


Fig. 2

Wiring Diagram for Combination Boilers

It is a good wiring practice that the supply to the unit should be via a two pole disconnection providing at least 3mm air gap.

Please note:

only insert link as above in Fig. 2 for boilers with 240V AC.

Be warned:

most combination boilers use 24V so do **not** insert the link for these applications.

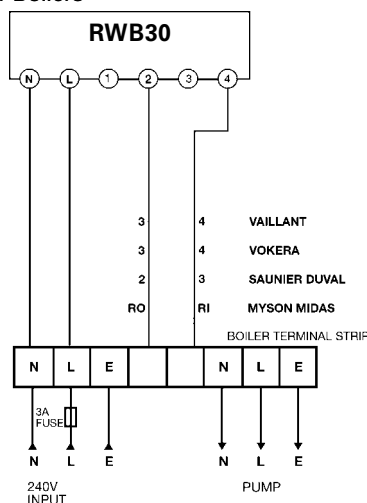


Fig. 3

RWB30 Timeswitch

The voltage applied to terminal 2, is switched to terminal 4 when the timeswitch is in the ON position and to terminal 3 when the timeswitch is in the OFF position (see Fig. 2). If 240V direct mains switching is required link terminals L to 2.

Note: All external wiring must comply with current IEE regulations. Wiring of this unit should be carried out by a qualified electrician. Whilst every effort is made to ensure the accuracy of the instructions given, you will appreciate that the discrepancies may occur due to a variety of reasons outside our control. If after wiring your system you find that it does not work properly you should:

Check that you have used the correct system and wired it correctly. Ensure that no wiring unit links have been missed and all screws are tight.

Check with the Technical Help line, there may be a simple explanation. (Technical Help Line: 01952 602048 Mon - Fri 9am - 5pm).

N.B. These units are not suitable for control of immersion heaters.

Fitting the Unit to the Backplate

Tilt the bottom of the case away from the wall, locate the two slots in the top of the case, over the two tabs at the top of the backplate. Push the bottom of the case towards the wall, slotting the two backplate screws into the bottom of the case, and tighten the screws. This enables the contacts in the unit to engage with those in the backplate.

Technical Data

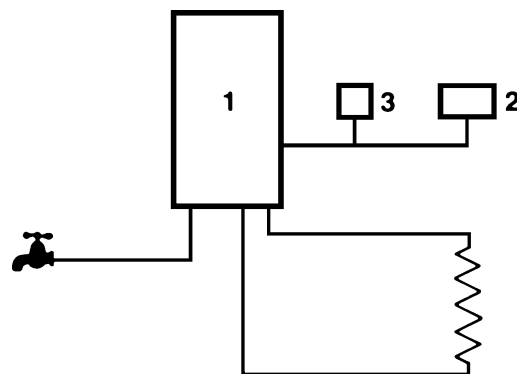
RWB30

Supply: 200/240V 50HZ
 Contact rating: 6A (resistance)
 2A (inductive)

Switching voltage: 24 to 240V
 Ambient temperature range: 0°C to 30°C
 Environmental humidity: 90% RH
 Housing: ABS resistant to fire as EN60730 standard
 Safety Standard: Conforms to EN60730, class A for use in normal pollution situation.

Application Example

COMBI BOILER



Key

1 Combi Boiler 2 RWB30 Timeswitch 3 RAD Room Thermostat

Siemens Building Technologies Ltd.
 Landis & Staefa Division
 Hortonwood 30, Telford TF1 4ET
 Tel: (01952) 677690
 Fax: (01952) 602059
 Help Desk Tel: (01952) 602048
 Orders Tel: (01952) 602063

RWB30 Timeswitch

User Instructions

Introduction

The RWB30 is an advanced daily timeswitch combining the benefits of electronic reliability and ease of use with mechanical dial operation. Please take time to read these operating instructions carefully.

For installation see the enclosed instructions.

Features

- Up to 2 ON/OFF periods per day.
- ADVANCE feature to bring forward the next ON or OFF period as required.
- BOOST feature to give an immediate 1 hour ON period at any time.
- Remembers last condition (ie ON or OFF) in the event of power failure.
- Volt free contacts suitable for combination boilers.

Factory Settings

Before leaving the factory your RWB30 was programmed to switch your system ON and OFF at the following times:

ON at 6.00 a.m. OFF at 8.30 a.m.
ON at 4.30 p.m. OFF at 10.30 p.m.

To activate this base programme:

Set clock dial to correct time. See **Adjusting the Clock (Dial Time)**.

Operating Controls

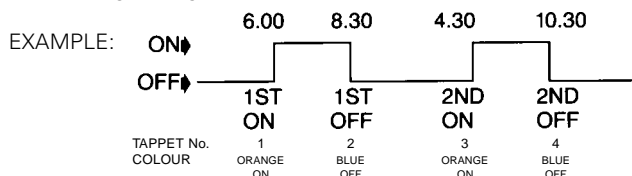
All controls for daily use are located on and to the right hand side of the dial.

Setting the Switching Programme

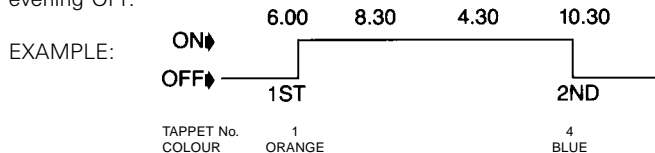
To make your selection slide the selector so that the vertical mark is pointing to the desired position as below.

OFF — Continuously OFF.

TWICE — The unit will switch ON and OFF according to the morning and evening settings.



ALL DAY — The unit will switch ON at the morning ON and OFF at the evening OFF.



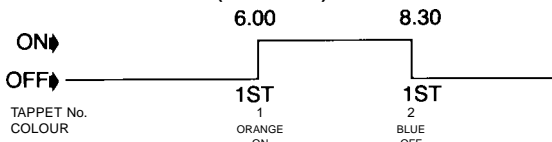
CONSTANT — Continuously ON

When the unit is in an 'ON' mode as above the LED lights for each circuit will be on.

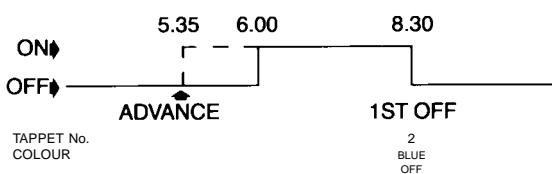
Using Override (Advance)

To advance the programme, that is to bring forward the next ON or OFF period as shown in the example below, press the override button.

EXAMPLE: **WITHOUT (OVERRIDE) ADVANCE**



EXAMPLE: **WITH (OVERRIDE) ADVANCE AT 5.35 AM**

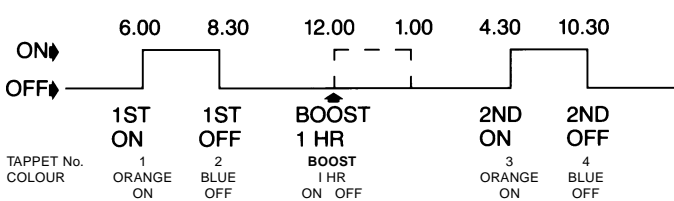


Using Boost

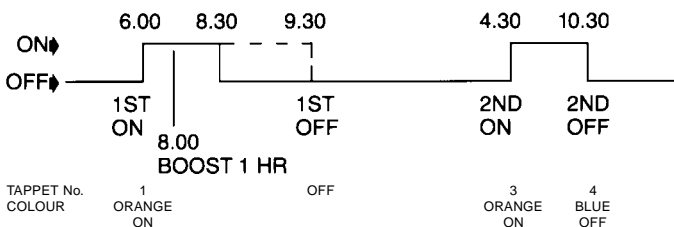
BOOST Pressing this button once brings the unit ON for 1 hour. To activate **BOOST** push the **BOOST** button.

NB This feature operates in OFF, ONCE and TWICE modes only.

EXAMPLE: **BOOST PRESSED AT 12.00**



EXAMPLE: **BOOST PRESSED AT 8.00**



Adjusting the Clock (Dial Time)

To set the clock to the correct time of day rotate the dial clockwise as shown by the arrow so that the correct time is adjacent to the raised line with time written against it. Please note the dial is a 24 hour dial with times shown numerically at two hour intervals and bars for hours between.

NB Do not rotate the dial anti-clockwise as this could cause damage to the mechanism.

Changing the ON/OFF Times

The RWB30 is supplied with factory settings (See **Factory Settings**) which will operate unless you change the set times:

If you wish to change the factory settings to your own times you can do this easily:

- No 1 tappet (orange) is the first ON during the 24 hour period
- No 2 tappet (blue) is the first OFF during the 24 hour period
- No 3 tappet (orange) is the second ON during the 24 hour period
- No 4 tappet (blue) is the second OFF during the 24 hour period

To set the tappets to your own programme times hold the dial and slide the relevant tappet and rotate it in either direction to your desired time, then rotate dial through a full 24 hour rotation.

NB This should be carried out with the programmer connected and power supply switched on to the backplate.

Power Failure

In the event of a mains power failure do not move the dial until power has been restored. If accidentally the dial has been moved during a power failure then rotate the dial through a full 24 hour rotation before resetting to actual time.